

**ADDENDUM No. 2**

Date: November 27, 2023

**PROJECT: 23.044.506 GOLD LOT PROJECT**

MBA PROJECT NO. C2306

**DISTRIBUTION**

(Includes any attachments as listed or noted herein)

WHO	OFFICE	VIA	PRINTS	SPECS	SUPP.DWGS
All Bidders/Plan Holders	---	email	---	---	---
(Owner) Sharon Proctor Jerry Reece Chris Hurt	Birmingham Jefferson Civic Center (BJCC)	email			

This Addendum forms a part of the Contract Documents. The following conditions, drawings, specification changes, etc. take precedence over any conflicting condition in the drawings and specifications or other Contract Documents. Portions of the Contract Documents not changed by this Addendum remain in effect.

This addendum is being issued to make revisions and/or provide relevant clarifications.

**GENERAL INFORMATION**

<u>AD 2.0</u>	<u>CIVIL DETAILS</u>
	1. CONDUIT/UTILITY STREET LAYING UNDER PAVING OPEN CUT DETAIL
	2. TOE DRAIN DETAIL
	3. TYPICAL GUARDRAIL DETAIL
<u>AD 2.1</u>	<u>ELECTRICAL PLANS</u>
	1. E2.0 SITE PLAN - ELECTRICAL
<u>AD 2.2</u>	<u>PROJECT MANUAL</u>
	1. BID FORM
	2. ACCOUNTING OF SALES TAX

## **ADDENDUM No. 2**

Date: November 27, 2023

### **PROJECT: 23.044.506 GOLD LOT PROJECT**

MBA PROJECT NO. C2306

#### **REVISIONS / CLARIFICATION / RFI's / etc.**

##### PLANS

###### AD 2.3 REVISION – DETAILS

1. Add detail to project drawings: CONDUIT/UTILITY STREET LAYING UNDER PAVING OPEN CUT DETAIL
2. Add detail to project drawings: TOE DRAIN DETAIL

###### AD 2.4 REVISION – C2.0 SITE & UTILITY PLAN

1. The contractor may include an alternate in their proposal to pave the handicap accessible parking spaces areas of the northeast corner of the lot with standard duty concrete paving as opposed to the shown standard duty asphalt paving.

###### AD 2.5 CLAIRIFICATION – C2.0 SITE & UTILITY PLAN

1. The contractor is responsible for the installation of all underground utility conduits and power lines. The contractor shall coordinate work with Fravert for sign installation, LAZ Parking for gate arm installation, and with the owner to pull power.
2. BJCC is responsible for the fiber/CAT6 lines after conduits have been installed by the contractor. The contractor shall coordinate with the owner to allow for installation of the referenced communication lines.
3. The contractor shall build the islands and leave the power and communications at stub outs for the 2 automated gated entrances to be done by LAZ Parking.
4. The contractor shall pull all wiring for power ready for final termination. If wiring for gate and signage will not be terminated at the completion of the contract work, then the contractor shall lockout-tagout circuits in de-energized position at the panel. Wiring at termination points on site to be covered and protected in outdoor rated boxes to avoid damage.

###### AD 2.6 CLAIRIFICATION – E2.0 SITE PLAN - ELECTRICAL

1. Site Plan E2.0 shows note 1 and 2 that do not have a description listed on the drawings. Note 1 in reference to the pull box. Notes 2 is at the riser pole. Replace the existing E2.0 sheet with the attached E2.0 sheet.

##### SPECIFICATIONS

###### AD 2.7 REVISION – BID FORM & ACCOUNTING OF SALES TAX

1. Replace the existing Bid Form and Accounting of Sales Tax Forms with the attached Bid Form and Accounting of Sales Tax. An alternate has been included to pave the ADA parking and walkway with standard duty concrete paving in lieu of the proposed asphalt paving (186 SY of paving total). The paving is not fully rectangular, but the approximate width of ADA paving is 80 LF and the length of the parking and walkway is 21 LF.

###### AD 2.8 CLAIRIFCATION – ASPHALT PAVING

2. Where the document states Asphalt Binder designation to be "PG 70-22", replace with "PG 76-22".

**ADDENDUM No. 2**

Date: November 27, 2023

**PROJECT: 23.044.506 GOLD LOT PROJECT**

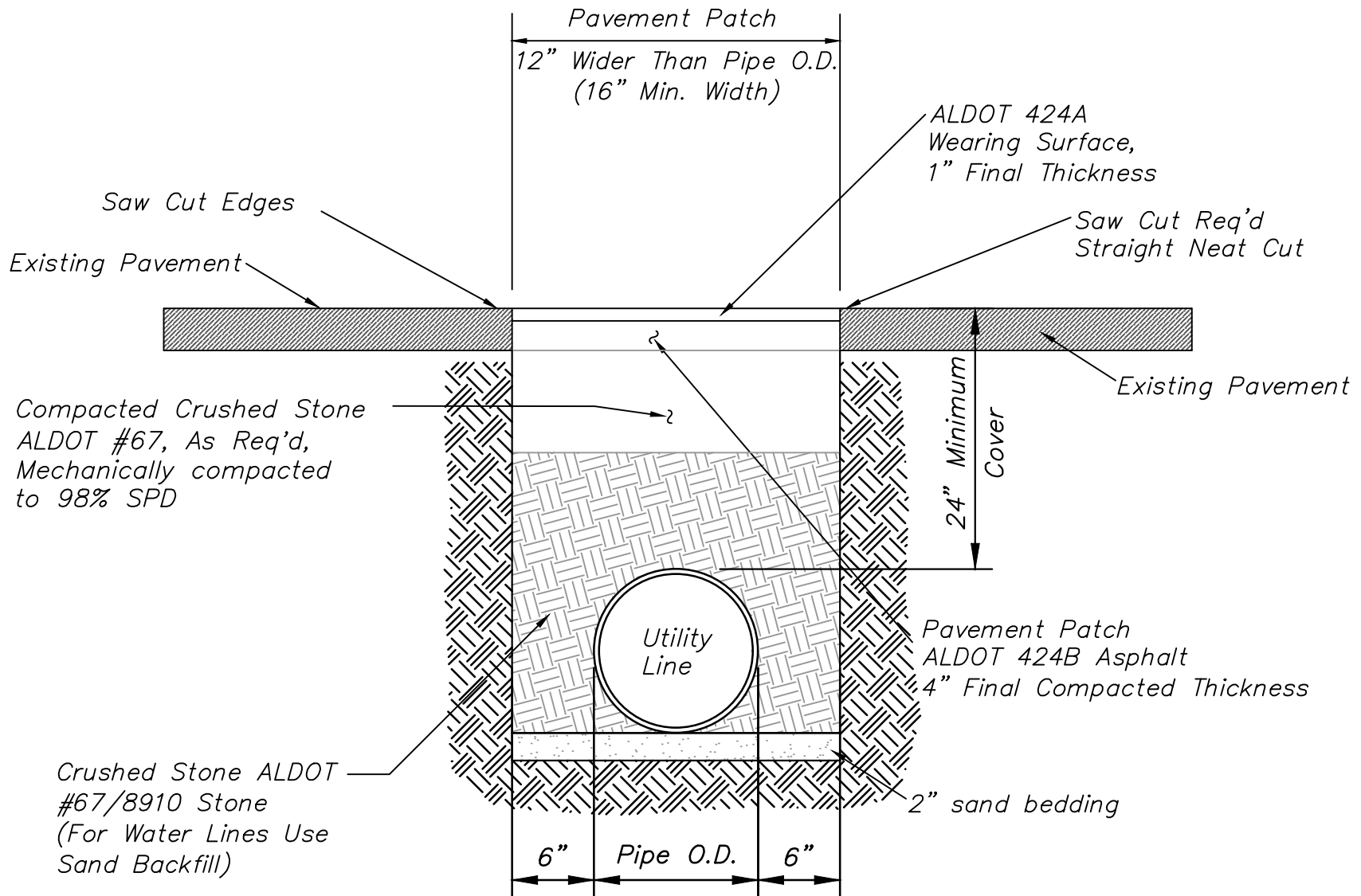
MBA PROJECT NO. C2306

Page 3

Attachments:

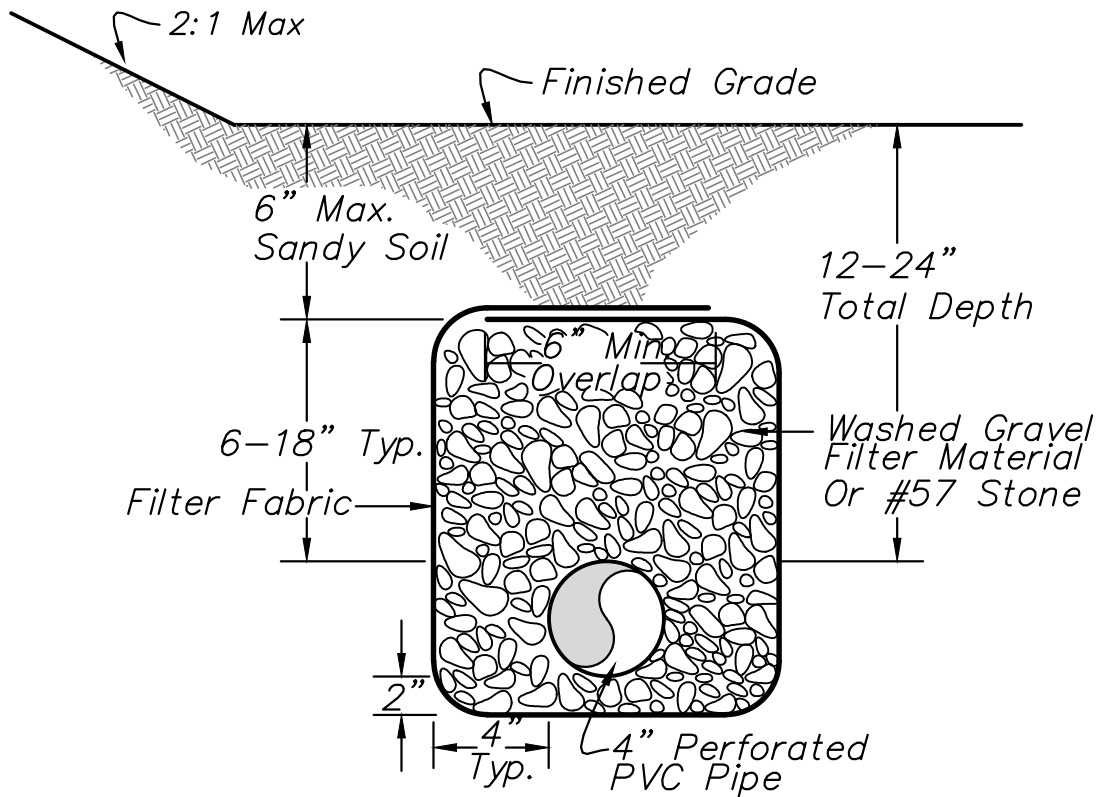
- CONDUIT/UTILITY STREET LAYING UNDER PAVING OPEN CUT DETAIL
- TOE DRAIN DETAIL
- TYPICAL GUARDRAIL DETAIL
- E2.0 SITE PLAN - ELECTRICAL
- BID FORM
- ACCOUNTING OF SALES TAX

**End of Addendum No. 2**



## CONDUIT/UTILITY BEDDING AND PAVING PATCH DETAIL

N.T.S.



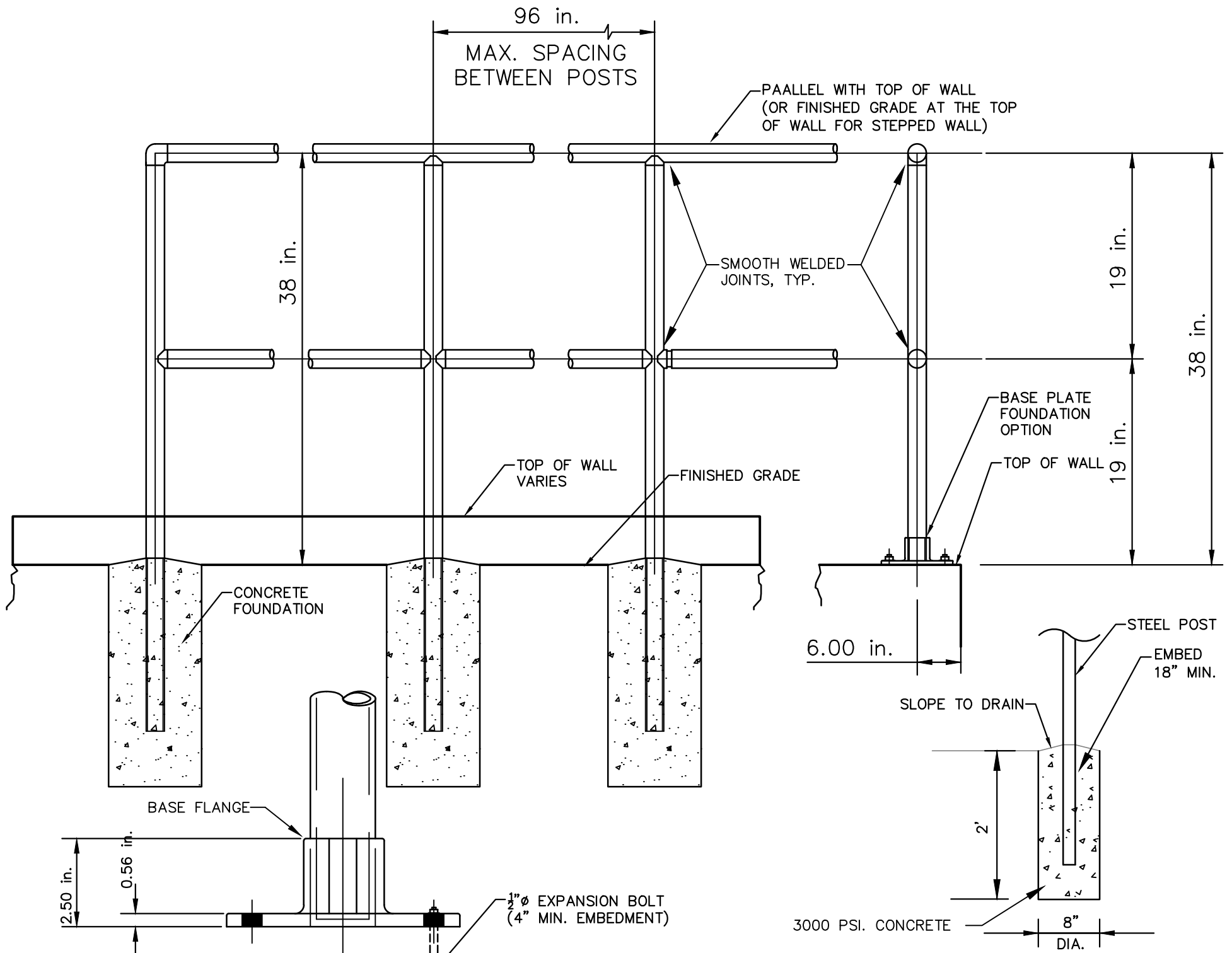
*NOTE: Provide 0.50% Min. Slope*

*NOTE: Downstream Pipe Must Be Solid  
And Have 24" Cover (Min.)*

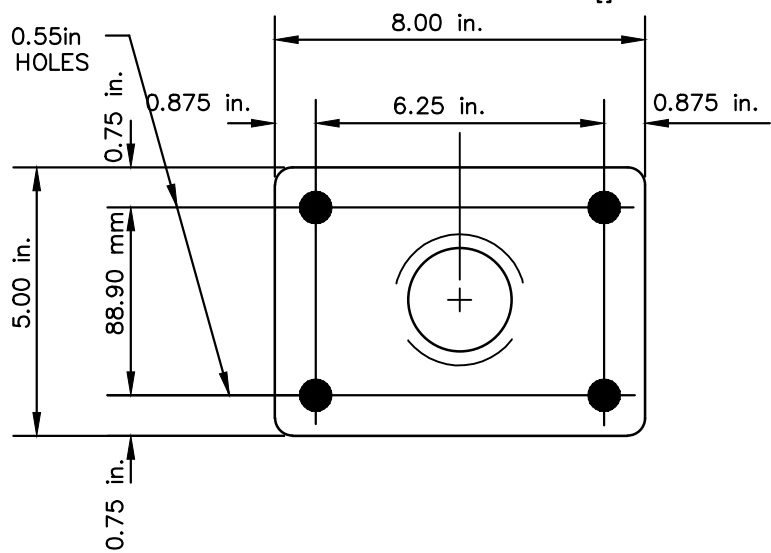
*NOTE: Connection To Downstream Pipe  
Must Have A C.O. At The Connection*

## **TOE DRAIN DETAIL**

*N.T.S.*



## GUARDRAIL FOUNDATION



## BASE PLATE (OPTION)

## NOTES:

- GUARDRAIL AND HANDRAIL FOR STAIRS SHALL BOTH HAVE A BLACK PAINTED FINISH AS FOLLOWS:
  - SURFACE PREPARATION: SSPC-SP 6 COMMERCIAL BLAST OR EQUIVALENT
  - PRIMER: TNEC 90-97 TNEC-ZINC @ 2.5 - 3.5 MILS DFT.(OR EQUAL)
  - INTERMEDIATE: TNEC SERIES 66 EPOXOLINE @ 3.0 - 5.0 MILS DFT. (OR EQUAL)
  - FINISH: TNEC SERIES 73U ENDURA-SHIELD @ 3.0 - 5.0 MILS DFT.(OR EQUAL)
- ALL MATERIALS ARE NON-PROPRIETARY. CONTRACTOR MAY SUBSTITUTE EQUAL PRODUCTS BY DIFFERENT MANUFACTURERS.
- PREPWORK, PRIMING, AND PAINTING TO BE PERFORMED BEFORE ERECTION. ANY KNICKS OR DINGS TO BE TOUCHED UP AFTER ERECTION BY APPROVED MATERIALS.
- GUARDRAIL MATERIAL: 1 1/4" O.D. SCH. 40 STEEL PIPE
- THE CONTRACTOR MAY SELECT TO MOUNT GUARDRAIL TO THE TOP OF THE RETAINING WALL. IN THIS CASE, THE CONTRACTOR SHALL USE A BASE PLATE SIMILAR TO THE ONE SHOWN IN THE DETAIL DESIGNED FOR THE REQUIRED LOADS.
- FOR SLOPING TERRAIN, RAILS SHALL SLOPE PARALLEL WITH GROUND AND BE 38" ABOVE FINISHED GRADE (ON THE HIGH SIDE).
- SHOP DRAWINGS AND SUBMITTALS ARE REQUIRED FOR GUARDRAIL AND HANDRAILS, PAINT, ETC.
- THIS PAINT SPECIFICATION SHALL SUPERCEDE POWER COAT FINISHED CALLED OUT IN HANDRAIL DETAIL

# TYPICAL GUARDRAIL DETAIL

N.T.S.





Exhibit 3



**Birmingham-Jefferson Civic Center Authority**

**address** 2100 Richard Arrington Jr. Blvd North

Birmingham, AL 35203

**website** www.bjcc.org **phone** 205.458.8400

**Bid Form**

**(Bidder must use this form; Fill in all spaces.)**

The Bidder, in compliance with the Invitation for Bid for **23.044.506 Gold Lot Project**, as specified, for BJCC, Birmingham, Alabama, having examined the specifications and related documents, hereby proposes to furnish all equipment, materials, accessories and/or services in accordance with the contract documents, within the time set forth herein, and at the prices stated below. These prices cover all expenses incurred in providing the equipment, accessories, materials and/or services under the contract documents, of which this bid is a part, and F.O.B. delivery of same to BJCC, Birmingham, Alabama.

Base Bid Amount \$ \_\_\_\_\_

Quantity Allowance No. 1: Signs QTY: 2 (EA) x UNIT PRICE: \$19,000 = \$ 38,000

Quantity Allowance No. 2: Undercut and Replace  
with Structural Fill QTY: 1,000 (CY) x UNIT PRICE: \$ \_\_\_\_\_ = \$ \_\_\_\_\_

Quantity Allowance No. 3: Full-Depth Asphalt Paving  
in Lieu of Asphalt Overlay QTY: 100 (SY) x UNIT PRICE: \$ \_\_\_\_\_ = \$ \_\_\_\_\_

Bidder acknowledges that the Base Bid Amount Includes Allowance No. 1, 2, and 3 in the amount.

Alternates: If alternates as set forth in the Bid Documents are accepted, the following adjustments are to be made to the Base Bid

Alternate No. 1: 186 SY of Concrete Paving in ADA Parking & ☐ (ADD) ☐ (DEDUCT) \$ \_\_\_\_\_  
Striped Walkway (in Lieu of Asphalt Paving).

**Bidder acknowledges receipt of Addenda Numbers \_\_\_\_\_ through \_\_\_\_\_ inclusively.**

**Prompt Payment Discount \_\_\_\_\_% NET \_\_\_\_\_ Days**

**This bid cannot be considered valid unless signed and dated by an authorized agent of the Bidder.**

Company Name: \_\_\_\_\_

Signature: \_\_\_\_\_

Printed Name: \_\_\_\_\_

Title: \_\_\_\_\_

Date: \_\_\_\_\_



**ACCOUNTING OF SALES TAX**  
**Attachment to Bid Response**

To:                    **Birmingham-Jefferson Civic Center Authority**                    Date:  
Project:            **23.044.506 Gold Lot Project**

**Sales Tax Accounting**

Pursuant to **Code of Alabama (1975) Section 40-9-14.1**, the Contractor accounts for the sales tax NOT included in the bid proposal form as follows:

	ESTIMATED SALES TAX AMOUNT
Base Bid Amount	\$ _____
Quantity Allowance #1   Signs	\$ _____
Quantity Allowance #2   Undercut and Replace with Structural Fill	\$ _____
Quantity Allowance #3   Full-Depth Asphalt Paving in Lieu of Asphalt Overlay	\$ _____
Alternate #1: Concrete Paving in ADA Parking & Striped Walkway (in Lieu of Asphalt Paving).	\$ _____

**Failure to provide an accounting of Sales Tax shall render the bid non-responsive. Other than determining responsiveness, sales tax accounting shall not affect the bid pricing nor be considered in the determination of the lowest responsible and responsive bidder.**

**Legal Name of Bidder** \_\_\_\_\_

**Mailing Address** \_\_\_\_\_

**\*By (Legal Signature)** \_\_\_\_\_

**\*Name (Type or Print)** \_\_\_\_\_ **(Seal)**

**\*Title** \_\_\_\_\_

**\*Telephone** \_\_\_\_\_